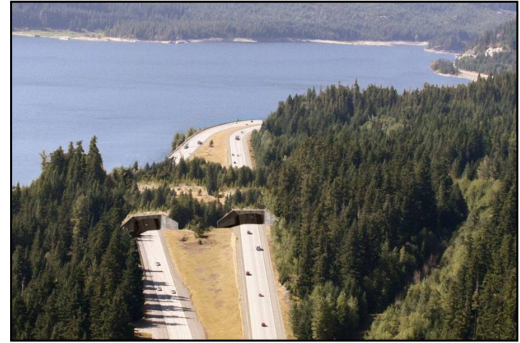


I-90 Snoqualmie Pass East Project

Making the roadway safer for people and wildlife.
Moving more than people.

2009 Economic Stimulus Discretionary Grant Request: \$40 million - I-90 Rock Knob Segment

- 1.5 miles of highway expanded to six lanes
- Adding to state funded first 5-miles of the total project.
- New chain-up area (westbound)
- Wildlife overpass near Keechelus Dam
- Ready to advertise for contract in 30 days
- 100 direct jobs plus 200 indirect jobs



Design for new Rock Knob Wildlife Overpass

Project Overview

Fifteen miles of Interstate 90 just east of Snoqualmie Pass from Hyak to Easton are proposed for an upgrade to build a safer, more efficient and reliable travelway for this critical statewide corridor.

- Over 25,000 vehicles a day travel project area; vital freight corridor.
- 14 connectivity emphasis areas with measures for waterways, wetlands, fish and wildlife.
- Wildlife crossing structures improve safety by reducing vehicle-animal collisions.
- Adds snowsheds to protect freeway from avalanches
- Final design selected and environmental analysis complete.

- **Total cost for full fifteen mile project is \$1.3 billion**
- 6.5 miles of project are ready for design-build and construction contracts
- 5 miles from Hyak to Resort Creek are funded by the Washington State Legislature



Removing avalanche at existing snowsheds

Project Support

Environment - "Washington is positioned to become the 'showcase' state for wildlife passages. The Snoqualmie Pass project has great potential to be the premier, state of the art example of wildlife crossings in North America." - **Trisha White, Director of Habitat and Highways Program at Defenders of Wildlife at its national headquarters in Washington, DC.**

Economy - "...the Washington State potato industry is worth in excess of \$3.4 billion to the State's economy and provides more than 20,000 jobs. Our growers and packers depend on shipping their product over the Snoqualmie Pass in both directions. ... potatoes from Skagit Valley travel to markets on the east coast ...our processed products need to get from Eastern Washington to the ports of Seattle and Tacoma in a timely manner.... Make I-90 at Snoqualmie Pass a safe and efficient all-weather conduit for Washington commerce and citizens." **Washington Potato Commission**

Legislature - "Why I'm so excited about this project is that it's an illustration of what happens when people who can't talk to each other, environmentalists and roads people, talk to each other." -- **Fred Jarrett, 44th District State Representative**

"This is a project where I have seen the environmental community collaborate with a wide variety of interests to achieve a common proposal. This reflects the project's importance to economic, transportation, recreation and conservation interests. The I-90 corridor is a national treasure, and the wildlife overpass will be something that people will come to Kittitas County just to see. The I-90 project is a rare win-win scenario." — **Bill Hinkle, 13th District State Representative**

Project Details

Funded: Keechelus Lake, 5 miles

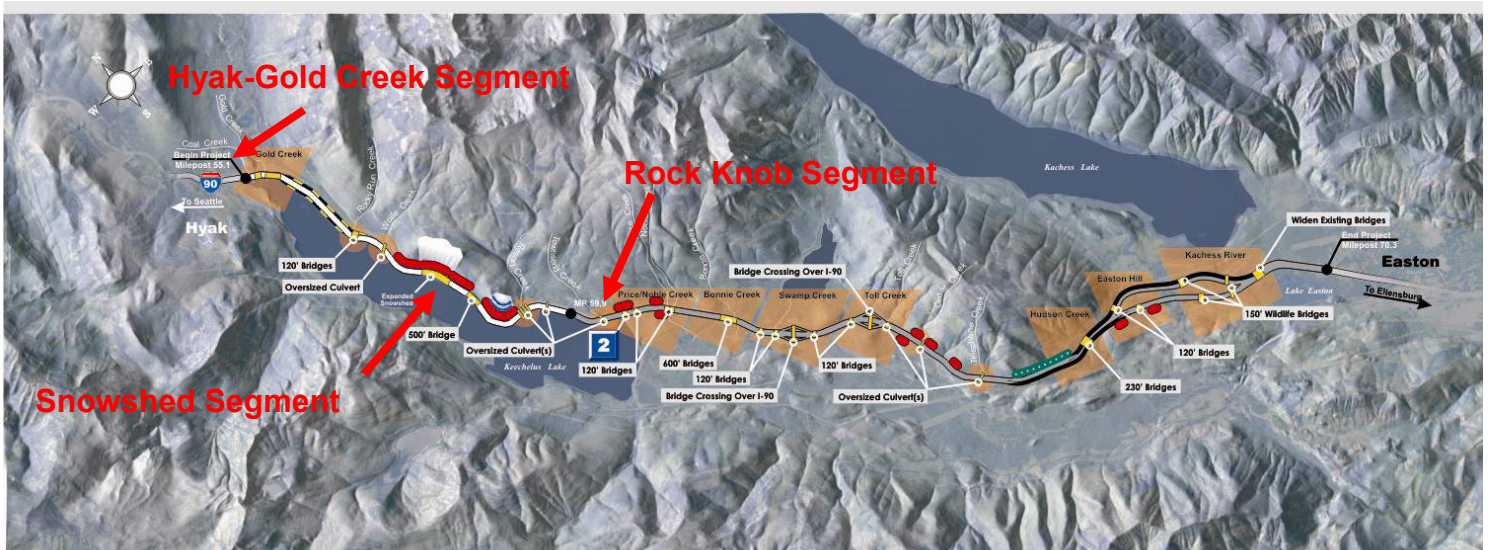
- \$595 million for 5 highway miles from Hyak to Resort Creek (Keechelus Lake)
- Authorized by Washington 2005 Transportation package and the 2008 Supplemental Transportation Budget.
- Governor's budget includes \$90 M for FY2009– to break ground on construction for 1 mile on west end of project (Hyak-Gold Creek Segment).
- Includes longer bridges over Gold Creek to restore stream floodplain and bull trout habitat, plus a smaller underpass that remains dry year-round to provide connectivity for land animals.
- Expanded snowsheds to protect all lanes from avalanches (additional engineering needed at this difficult location).
- Groundbreaking for construction late spring 2009, completion scheduled for 2015

Unfunded and ready for contract: Rock Knob Segment

- \$40 million for 1.5 miles extension from Resort Creek to east end of Rock Knob overpass

Unfunded with WSDOT engineering work remaining: Last 8.5 miles

- Vital slope stabilization to reduce risk of falling rocks
- Includes bridges over 7 waterways and construction of a wildlife overpass at Easton Hill.



For More Information:

Brian White, Assistant Regional Administrator
 Washington State Dept. of Transportation
 I-90 Project Office
 1710 South 24th Ave, Suite 100
 Yakima, WA 98902
 1-888-535-0738
whiteb@wsdot.wa.gov

www.wsdot.wa.gov/Projects/I90/SnoqualmiePassEast/

Charlie Raines, Coalition Director
 I-90 Wildlife Bridges Coalition
 3600 - 15th Ave West #101
 Seattle, WA 98119
 206-619-5575
ccharaines@comcast.net
info@i90wildlifebridges.org

www.i90wildlifebridges.org