



## Consider renewing your membership through the *Wildland Partners* monthly giving program.

**Whether you choose \$10, \$25, or \$250 a month, it all adds up to the sustaining support that keeps the Northwest wild!**

*Wildland Partners* provide Conservation Northwest stable year-round funding to protect our region's extraordinary wildlife habitat, old-growth forests, and recreational areas. This automatic monthly giving program is a safe, efficient, and convenient way to put more of your money to work. The amount you specify will be automatically deducted from your bank account or credit card each month (or each quarter) for as long as you choose to stay enrolled.

As a member of *Wildland Partners*:

- Your membership with Conservation Northwest will be renewed automatically.
- You'll see exactly how much you've contributed on your bank or credit card statements.
- A yearly tax record will be mailed to you the following February of each calendar year.
- You may change or cancel your contribution at any time.

**To join**, complete the form below and **return it to 1829 10<sup>th</sup> Ave W, Ste B, Seattle WA 98119**.

-----  Please cut here  -----

**YES!** Please enroll me in the *Wildland Partners* program. I'd like to contribute:

Monthly \$ \_\_\_\_\_ (\$10 minimum)    OR    Quarterly \$ \_\_\_\_\_ (\$15 minimum)

Name \_\_\_\_\_ Signature \_\_\_\_\_

Street (must match billing address) \_\_\_\_\_

City \_\_\_\_\_ State \_\_\_\_\_ Zip \_\_\_\_\_

Email \_\_\_\_\_ Phone (requested) \_\_\_\_\_

**PAYMENT CHOICES:** All gifts are processed on the 5<sup>th</sup> \_\_\_\_ or 20<sup>th</sup> \_\_\_\_ of each month; let us know which you'd prefer.

\_\_\_\_\_ **Electronic Funds Transfer** through my checking account (Best return on your dollar! You won't have to get credit card updates to us regularly!). I have enclosed a check, made payable to Conservation NW for my first contribution. Subsequent withdrawals will be made automatically.

\_\_\_\_\_ **Credit Card (VISA/ Mastercard/AMEX)**. Subsequent withdrawals will be charged automatically in accordance with the amount/frequency you've chosen above. Please provide a billing address for card if different than above.

Credit Card # \_\_\_\_\_ Exp. Date \_\_\_\_\_

Card Billing Address/Name (if different than above) \_\_\_\_\_

# As a Wildland Partner, you choose any amount that's right for you. Gifts at every level make a difference!



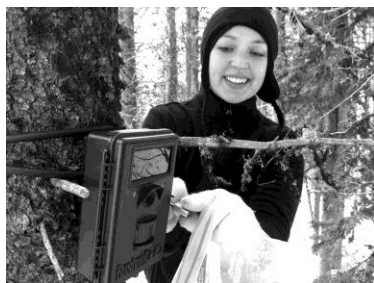
**\$200 a month** can power our outreach efforts to support **wolf recovery** in Washington. From hiring cowboys (and girls!) to reduce wolf-livestock conflict through our Range Rider project, to working with communities as wolves disperse across the state, we're on the ground where the packs are to ensure that wolf recovery succeeds in the Northwest.

**\$150 a month** can help us **watchdog forest policy and pursue innovative partnerships** with the timber industry, communities, government agencies, and fellow conservation organizations to make certain our public lands are stewarded effectively for the benefit of both people and wildlife.



**\$100 a month** can provide the resources we need to play a leading role in **grizzly bear recovery and habitat protection** efforts on both sides of the U.S. – Canadian border. From community outreach to make the public more “bear aware”, to decommissioning roads that fragment bear habitat, we're leading the way toward a return of this iconic species.

**\$75 a month** can allow us to work in collaboration with the Department of Transportation and other key partners to secure funding and implement plans for **new wildlife bridges along Interstate 90 and Highway 97** to reduce wildlife mortality and reconnect critical habitat and migration routes on either side of the highway.



**\$50 a month** can support a volunteer team with our **Citizen Wildlife Monitoring Project** to collect critical data that in turn influences wildlife policy and management in Washington.

**\$25 a month** can put volunteer crews on the ground to implement **restoration projects in key habitat corridors**.



**It all adds up! Even \$10 a month** can do so much to make the vision of a wilder Northwest a reality. These critical gifts help us respond to new opportunities, such as partnering with the WA Department of Fish and Wildlife on the **reintroduction of native species like the Pacific fisher**. After a successful release in the Olympics, plans are now underway to reintroduce fishers in the North Cascades. As a *Wildland Partner*, you help make it happen!